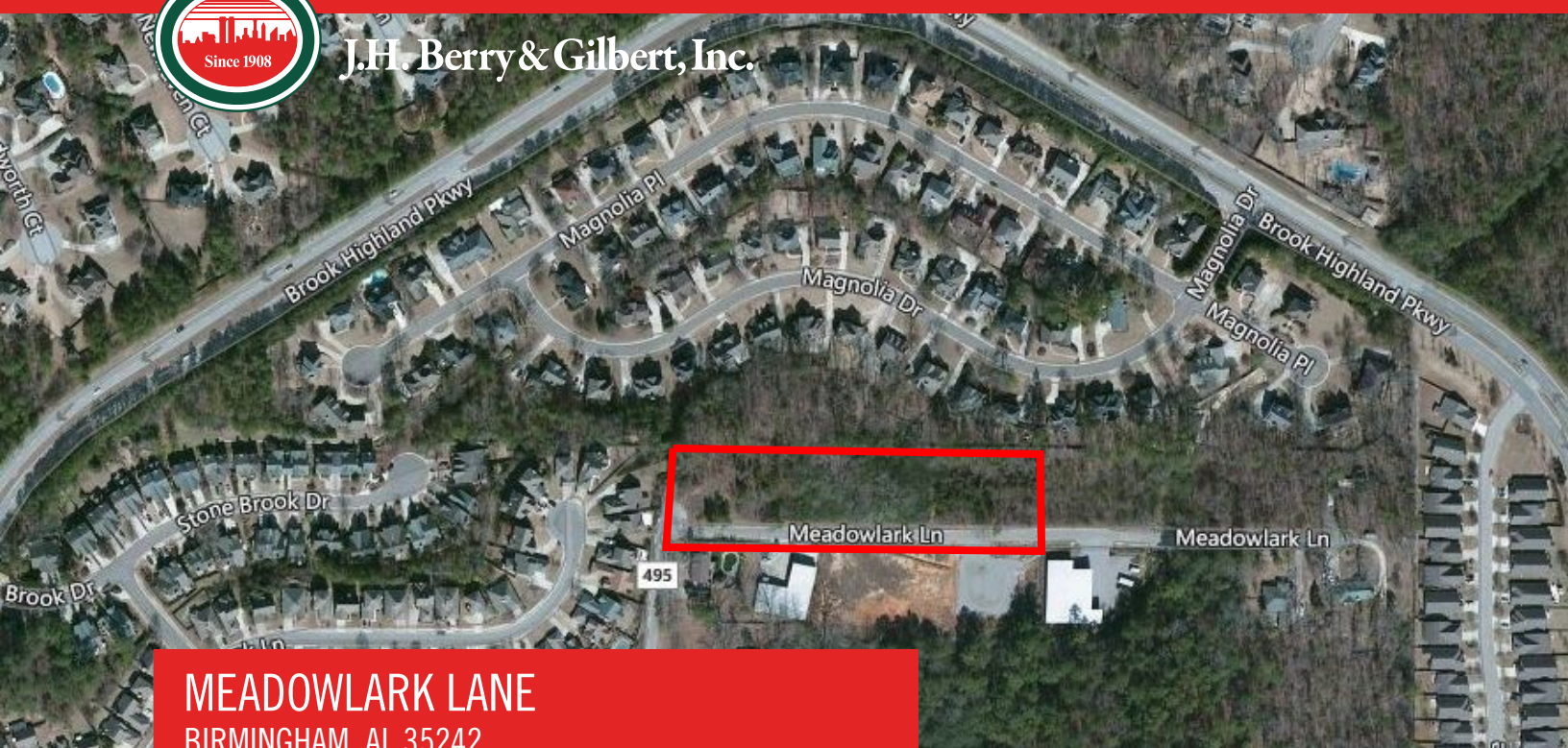




J.H. Berry & Gilbert, Inc.



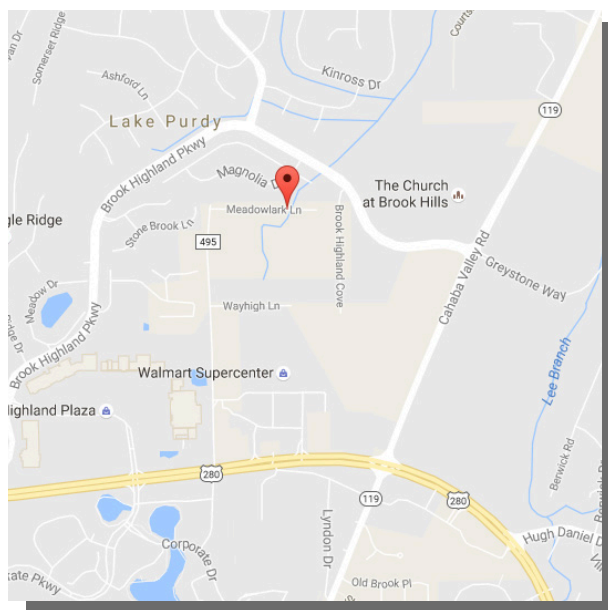
**MEADOWLARK LANE**  
BIRMINGHAM, AL 35242

**DEVELOPMENT LAND**

**PROPERTY FEATURES**

- Available: +/- 2.62 Acres
- Parcel ID: 03-9-31-0-001- 002.002
- Zoned B-2, general business
- Municipality: Unincorporated Shelby County

**PRICE:**  
\$195,000



**CONTACT:**  
William M. Gunn, SIOR, CCIM  
bgunn@jhberry.com  
(205) 226-8625

3125 INDEPENDENCE DRIVE | SUITE 125  
BIRMINGHAM, AL 35209

JHBERRY.COM